

Croeso I Dosbarth Gwenyn



Confident



Ambitious



Resilient



Respectful



Family

Mission Statement and Core Values

*"The More we learn, the more we grow.
Ysgol Drury is a great place to go!"*



Resilient

Respect

Family

Ambitious

Confident

Contact Information

Drury Primary School
Beech Road
Drury
Flintshire
CH7 3EG

01244 543005

Email: dpmail@hwbcymru.net

➡ Website: www.druryprimary.co.uk

➡ X: [@DruryCP](#)

➡ Facebook: [Drury Primary](#)

Child Safeguarding



First Aiders

Mrs Jones

Miss Durham

Mrs Evans

Mrs Wainwright

Secretary

TA

ALN Sup

ALN Support



The Nursery – Dosbarth Gwenyn



My name is Sian Ellis and I am the Nursery Teacher at Drury Primary School. I have put this booklet together to answer some questions or worries you may have regarding your child/children starting full time education.

We aim to make the transition from home to school as easy as possible but we realise that it can sometimes be a difficult time for both parents and children. As you read through this booklet we hope that many of your questions about your child starting school will be answered.

When your child starts in Nursery or Early Entitlement there will be many new rules and routines to learn. You can help your child to become familiar with these by discussing some of the points overleaf before they arrive and during the first few weeks of school. This will have the added effect of increasing your child's confidence as they begin an exciting new chapter of their lives.



Miss Durham



Mrs Van Delden

New Curriculum for Wales

The Curriculum for Wales aims to provide a whole school approach to teaching six areas of learning and experience. These will be taught through a variety of topics which will excite and inspire learners. Teachers are encouraged to design creative and innovative lessons which will support the development of the four purposes helping your child to be:

- 1) An ambitious, capable learner, ready to learn throughout your life
- 2) An enterprising, creative contributor, ready to play a full part in life and work
- 3) An ethical, informed citizen, ready to play your part in Wales and the world
- 4) A healthy, confident individual, ready to lead a fulfilling life as a valued member of society.



Expressive Arts



Health and Well-being



Humanities



Languages,
Literacy and
Communication



Mathematics and
Numeracy



Science and
Technology

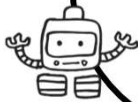
Our Non-Negotiables

Our learners are entitled to a selection of non-negotiable elements to their education experience. These factors enrich learning and help to create a curriculum which broadens their horizons, challenges their perceptions both inside the and beyond.



**Welsh
Language,
Culture
and
heritage**

Exploring the locality and further afield while embracing the rich history and diverse geographical features of Wales. Using Welsh to communicate in school and the wider community. Raising the profile of Welsh to create a bilingual ethos.



**Digital
Learning**

Using and understanding a wealth of software and hardware to transform learning both inside and outside the classroom. Accessing, understanding, sharing and presenting information confidently and across the curriculum with creativity.



**Learning
in the
outdoor
s**

Utilising our impressive grounds to understand and support the environment and habitats through cross cutting themes throughout the year. Improving the school site in a sustainable way that embeds habits for learners to use in their everyday lives.



**Health
and
wellbein
g**

Empowering learners to understand their mental health and that of others. Arming children with skills and strategies to face challenge and diversity in a fair and confident way. Developing the skills and knowledge to ensure well rounded individuals can support each other, the school and the wide community. Preparing learners so they may better understand themselves and the plight of others less fortunate.

How can Parents help?

The most crucial thing to assist your child is to encourage their independence and resilience- to give things a try. Even if they are unable to do something, it is so important for them to have the confidence to give things a go as this is how we learn!

Do things with your child and talk about them – whether it's everyday things such as shopping, playing outside, a walk or special things, such as buying a birthday present for a friend. Help them to join in the discussions, give them some choices so that they can make decisions. Play games together – board games such as Snakes & Ladders or Pairs. Read stories to your child, teach them songs and rhymes. Encourage them to 'mark make' draw, paint, colour, model with play dough and use a scissors.

Encourage your child to take responsibility by finding their belongings put their play things away – this is an important activity as well as making life easier for us all!

All these things, although they seem small, help a child extend their vocabulary, help them to tackle problems and help them develop the necessary skills for life which will make your child ready for learning at school

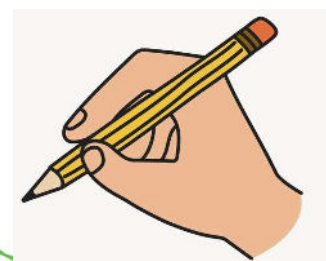


Preparing your child for school

What should he/she be able to do?
Starting school means your child will begin to be more independent and to begin to look after themselves. There are many ways in which you, as parents can help your child on this path.

Encourage your child to:

- * Put on their coat and attempt to fasten it.
- * Put on their shoes and fix Velcro or fasten buckles.
- * **Use and flush the toilet themselves and re-dress before washing and drying their hands.**
- * Use a handkerchief or tissue.
- * Look after/be responsible for their own belongings.
- * Say 'Please' and 'Thankyou'.
- * Tidy up after themselves
- * Share toys and equipment and take turns
- * Recognise their own name
- * encourage the use of the phonic alphabet when sounding out words
- * Recognise and count numbers to 10
- * Hold and use pencils/crayons/penc



What is the Daily Routine?

We offer a balanced curriculum and each session follows a flexible routine that gives the children plenty of opportunity to have periods of uninterrupted play. Teaching staff will interact with the children, extending and enhancing their experiences, observing and assessing at specific times. Time is planned to listen to the children and for them to reflect on their activities. Children are given the opportunity to work individually, in pairs, in

Session times

School starts at 9.00am. Children will line up outside the school gate and will be collected by a member of staff and directed into the classroom. They will have a peg with their name on it to hang coats. Books bags/small bag should be used. We will practice this when children arrive.

The session ends at 11:30am. The children are dismissed from school once the adult collecting them is present. Children must not leave the school grounds unless they are with the adult who has collected them. If you are not able to collect



Healthy Schools

As a school we value the health and well-being of all members of our school community. Promoting a healthy lifestyle and recognising the importance of a healthy mind and body is a key aspect of all we do in school. In recent years, we have seen a rise in allergies and intolerances among the children. To ensure all our pupils are kept safe we provide a healthy **PLEASE** : also a nut free establishment.



**NO PEANUTS
OR
NUT PRODUCTS**

Water

We encourage every child to bring in a reusable water bottle to school that they can keep in class and drink throughout the day. The water bottle must be clearly labelled with your child's name and contain only water.

Healthy drinks 
in primary schools

Snack

As part of our healthy school initiative we provide snack for all children. This is at a cost of £1.50 per week. Children can choose from fruit, vegetables, toast, cheese & crackers, yogurt, cereal, raisins and crumpets. To encourage independence, they will be involved in preparation, serving and clearing up. We also have the option of milk provided.

Healthy snacks 
in primary schools



School Uniform



PE Kit



General Information

- **Illness and Absence** - Please notify the school by phone or a note a.s.a.p. if your child is unwell or unable to attend school for any reason. We strongly discourage children having time out of school as this will disrupt their learning and may lead to them missing out on important concepts. However, if it is essential that you take your child out of school for a personal reason, please email the school office on www.dpmail@hwbcymru.net with all relevant details.
- **Allergies** – please inform staff if your child has any allergies or dietary requirements.
- **Medication** – staff will administer medication to children if requested and you will be asked to complete a consent form from school office.
- **Asthma** – children with asthma. Please provide school with a labelled inhaler, stating name and dosage. Forms will need to signed and remain in school office.
- **Head lice** – please check your child's hair regularly. Hair should be tied back to help prevent any spread.
- **Photographic consent** – you will be asked to sign a proforma giving your consent for photos and videos to be used on social media platforms.

Screen Time Limits

Too much Screen Time could have an impact on your child's language development.

Ideas for safe Screen Time at home ?

- Sit with your child and share the screen and talk about what they are doing or seeing. ?
- Talk about what your child saw on screen in your everyday activities. ?
- Set limits on the amount of time young children access screens – this might be a challenge to start with but most little children prefer time with their parents playing, exploring and doing physical activities! ?
- Reading a book and chatting together is better than any app for child's language development. ?
- Switch off and unplug devices and TVs when they are not in use – background noise can impact on listening skills and children will be easily distracted by TV programmes even if the sound is turned down. ?
- Think about YOUR phone behaviour! Everyday activities like helping your baby and child with bathing or feeding, eating out, sitting on the bus, playing in the garden provide opportunities for you to talk and interact together. If you are always looking at your phone, you are less likely to be looking at your child.



Beech Tree Club & Wraparound

Beech Tree Club provides quality Before and After School childcare for the children of Drury Primary school aged 3-11 years.

We also provide 'Wraparound' care for our nursery aged children (3/4yr olds).

They are based here on the site of Drury Primary School and have the use of a lovely purpose-built lodge.

Opening times are as follows:

Before/After School Club:

Monday to Friday: 7:30am - 8:45am
3:15pm – 5:30pm

Wraparound childcare

Monday to Friday: 11:30am – 3:00pm
(3:15pm if booked into after school club)

For further information on eligibility please click on the following:



Llywodraeth Cymru
Welsh Government